

ES151802

Villa, Manilva, Málaga

341,000€




106m²

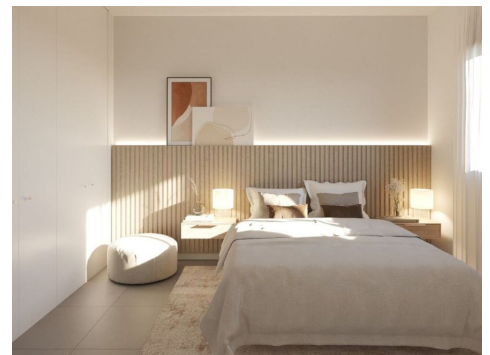

84m²


2


2


N/A

This outstanding project of villas with at least 2 bedrooms and 2 bathrooms, and a parking space and storage space all included. A variety of detached and semi-detached, all close to Sotogrande with terrific sea views. The flow plan is actually the floor plan, as it is the epitome of smooth transitions. Big terraces and a fully fitted kitchen. A dedicated club house with gym, spa, & a large infinity pool surrounded by manicured gardens.



Web: www.1casa.com

Email: info@1casa.com

Tel: +44 333 022 0135