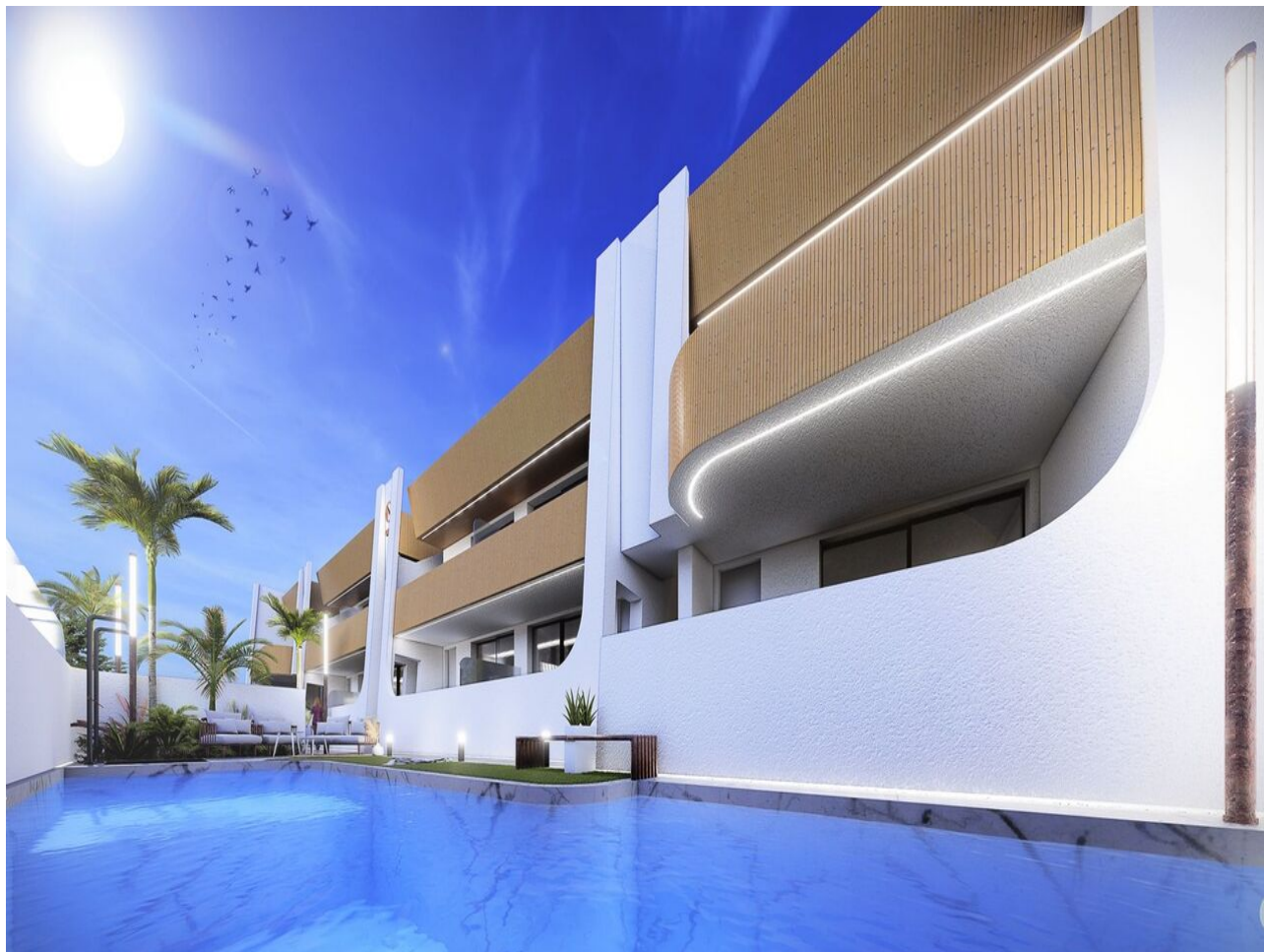


ES167251

Apartment, San Pedro del Pinatar, Murcia

199,950€



N/A



N/A



2



2



N/A

Signature style 'premium turn key' homes next to the beach. NOW AVAILABLE ... Choose from a ground floor model with large front terrace and rear patio or penthouse loft home with front terrace and large private rooftop solarium with pergola and summer kitchen, located just 350 metres from the beach. Garden / Ground Floor Home: The front door opens into the spacious living zone with dining area set to the side. The fully fitted kitchen is located next to the sliding doors allowing the natural sun light inside. To the side is a family bathroom with basin, toilet and shower and 2 generous sized bedrooms – the master bedroom having en-suite bathroom. Penthouse Model: A staircase leads you to the top floor area with large tiled private terrace, with entrance door to the property. Like the ground floor models a generous open plan lounge/ dining area with the oversized kitchen – 2 bedrooms to the side (master with en-suite). Access is gained to the private roof solarium from the rear of the kitchen. Turn Key: Our feature homes include all internal and external LED lighting, installed a/c machine, heated bathroom flooring in both bathrooms, fitted kitchen with induction

